



Oklahoma Horse Racing Commission Statistical Audit Report of Gaming Operations

Blue Ribbon Downs Racino, Will Rogers Downs and
Remington Park



August 2007



Office of the Oklahoma State Auditor and Inspector
Jeff A. McMahan, CFE

**OKLAHOMA HORSE RACING COMMISSION
STATISTICAL REPORT OF GAMING OPERATIONS
BLUE RIBBON DOWNS RACINO, WILL ROGERS DOWNS
AND REMINGTON PARK
AUGUST 2007**

This publication is printed and issued by the State Auditor and Inspector as authorized by 74 O.S. 2001, § 212 and 74 O.S. 2001, § 3105. Forty copies have been prepared and distributed at a cost of \$81.95. Copies have been deposited with the Publications Clearinghouse of the Oklahoma Department of Libraries.



STATE OF OKLAHOMA
OFFICE OF THE AUDITOR AND INSPECTOR

Jeff A. McMahan
State Auditor and Inspector

September 7, 2007

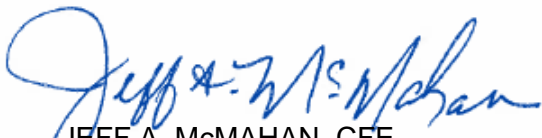
**TO THE MEMBERS OF THE OKLAHOMA
HORSE RACING COMMISSION**

Transmitted herewith is the Statistical Report of Gaming Operations for Blue Ribbon Downs Racino, Will Rogers Downs and Remington Park for the month of August 2007, which is the result of our monitoring and data accumulation.

We wish to take this opportunity to express our appreciation for the assistance and cooperation extended to our office during this time.

The Office of the State Auditor and Inspector is committed to serve the public interest by providing independent oversight by issuing reports that serve as a management tool to the state. Our goal is to ensure a government, which is accountable to the people of the State of Oklahoma.

Sincerely,



JEFF A. McMAHAN, CFE
State Auditor and Inspector

**OKLAHOMA HORSE RACING COMMISSION
STATISTICAL REPORT OF GAMING OPERATIONS
BLUE RIBBON DOWNS RACINO, WILL ROGERS DOWNS AND REMINGTON PARK
FOR THE MONTH OF AUGUST 2007**

TABLE OF CONTENTS

	<u>PAGE</u>
STATE AUDITOR AND INSPECTOR LETTER	4
STATISTICAL REPORT OF GAMING OPERATIONS	5



STATE OF OKLAHOMA
OFFICE OF THE AUDITOR AND INSPECTOR

Jeff A. McMahan
State Auditor and Inspector

TO THE MEMBERS OF THE OKLAHOMA
HORSE RACING COMMISSION

We compiled the information presented in this report from the statistical data obtained from the gaming vendors and licensees located at Blue Ribbon Downs Racino, Will Rogers Downs and Remington Park for the month of August 2007.

We were not engaged to perform an audit in accordance with generally accepted auditing standards, the objective of which would be the expression of an opinion on specified elements or accounts. Accordingly, we do not express such an opinion. This report relates only to the procedures specified above and does not extend to any financial statements of the racetracks or racinos taken as a whole.

In planning and performing these procedures, we considered the internal control structure of the gaming departments; however, our procedures were substantially less in scope than the procedures we would have applied if we had been engaged to express an opinion on the internal controls. Accordingly, we do not express an opinion on their internal control structure.

Sincerely,

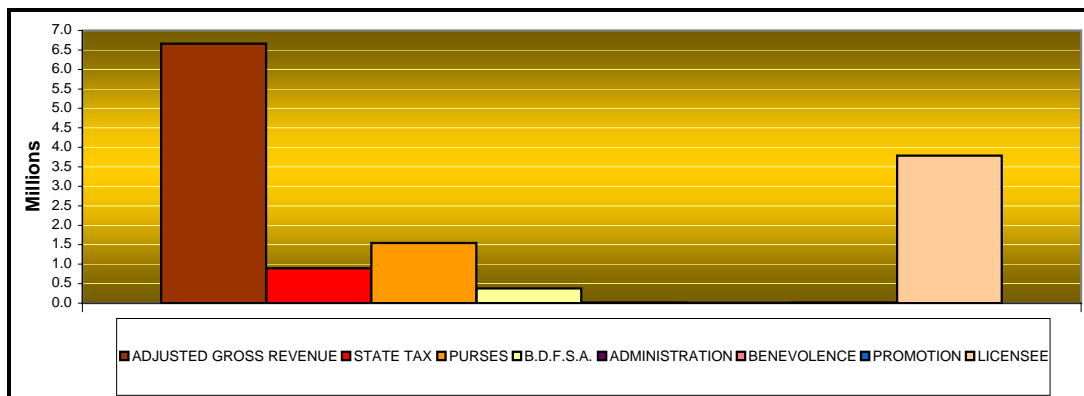
A handwritten signature in blue ink that reads "Jeff A. McMahan".

JEFF A. McMAHAN, CFE
State Auditor and Inspector

September 7, 2007

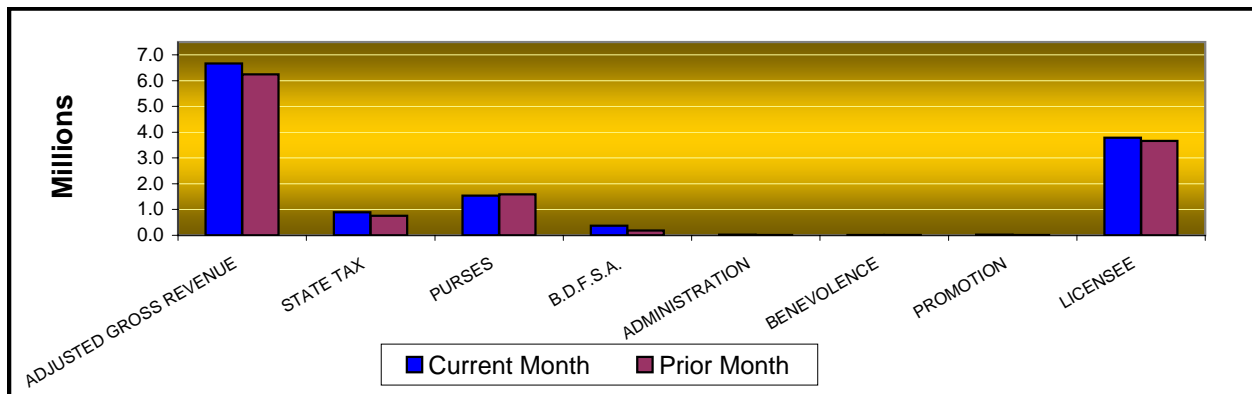
**OKLAHOMA STATE AUDITOR & INSPECTOR
GAMING AT OKLAHOMA HORSE RACING TRACKS
AUGUST 2007**

	<u>TOTAL</u>	<u>BLUE RIBBON DOWNS</u>	<u>WILL ROGERS DOWNS</u>	<u>REMINGTON PARK</u>
Gaming Days This Month	93	31	31	31
Opening Date		10/17/05	12/09/05	11/21/05
Adjusted Gross Revenue	<u>\$6,664,730.46</u>	<u>\$419,107.56</u>	<u>\$1,598,706.72</u>	<u>\$4,646,916.18</u>
State Tax				
Higher Education Trust Fund	107,858.26	5,029.29	19,184.48	83,644.49
Education Reform	790,960.60	36,881.47	140,686.19	613,392.94
Purse Fund				
<u>Purses</u>				
Thoroughbred	678,377.40	41,020.15	187,768.11	449,589.14
Quarterhorse	750,283.17	41,727.40	191,005.49	517,550.28
Paint & Appaloosa	113,406.22	9,272.75	42,445.66	61,687.81
Breeding Development Fund				
<u>Special Account</u>				
Thoroughbred	257,634.73	4,950.71	22,661.67	230,022.35
Quarterhorse	117,767.80	4,243.46	19,424.29	94,100.05
Paint & Appaloosa	11,532.84	942.99	4,316.51	6,273.34
<u>Administration</u>				
Thoroughbred	9,600.12	471.50	2,158.25	6,970.37
Quarterhorse	8,903.09	471.50	2,158.25	6,273.34
Paint & Appaloosa	1,281.43	104.78	479.61	697.04
<u>Benevolence</u>				
Thoroughbred	4,800.06	235.74	1,079.13	3,485.19
Quarterhorse	4,451.54	235.74	1,079.13	3,136.67
Paint & Appaloosa	640.72	52.39	239.81	348.52
<u>Promotions</u>				
Thoroughbred	9,600.12	471.50	2,158.25	6,970.37
Quarterhorse	8,903.09	471.50	2,158.25	6,273.34
Paint & Appaloosa	1,281.43	104.78	479.61	697.04
Licensee	\$3,787,447.84	\$272,419.91	\$959,224.03	\$2,555,803.90



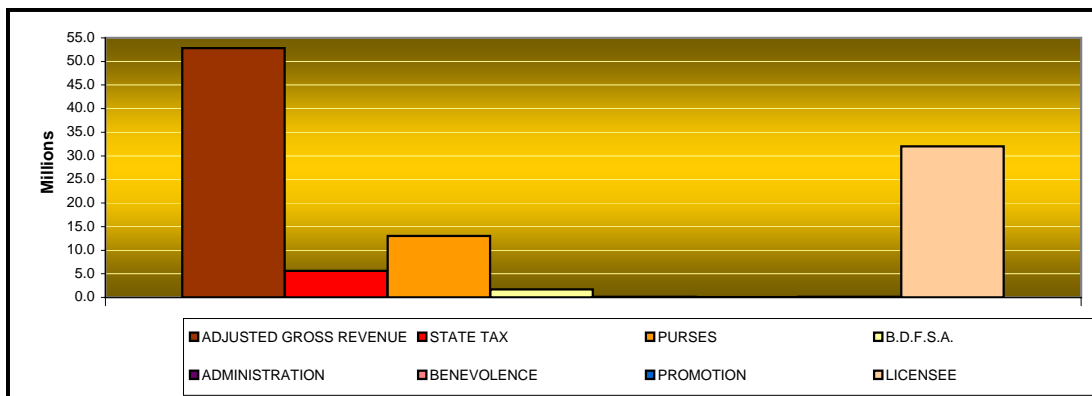
**OKLAHOMA STATE AUDITOR & INSPECTOR
GAMING AT OKLAHOMA HORSE RACING TRACKS
AUGUST 2007**

	<u>TOTAL</u>	<u>PRIOR</u> <u>MONTH</u>	<u>%</u> <u>CHANGE</u>	<u>PRIOR</u> <u>YEAR</u>	<u>%</u> <u>CHANGE</u>
Gaming Days	93	93	0.00%	93	0.00%
Opening Date					
Adjusted Gross Revenue	\$6,664,730.46	\$6,247,091.96	6.69%	\$6,046,952.33	10.22%
State Tax					
Higher Education Trust Fund	107,858.26	90,980.21	18.55%	99,928.45	7.94%
Education Reform	790,960.60	667,188.21	18.55%	732,808.66	7.94%
Purse Fund					
<u>Purses</u>					
Thoroughbred	678,377.40	774,284.17	-12.39%	753,412.50	-9.96%
Quarterhorse	750,283.17	711,221.13	5.49%	692,867.38	8.29%
Paint & Appaloosa	113,406.22	103,468.59	9.60%	93,425.41	21.39%
Breeding Development Fund					
<u>Special Account</u>					
Thoroughbred	257,634.73	93,448.09	175.70%	76,618.22	236.26%
Quarterhorse	117,767.80	92,006.85	28.00%	70,461.09	67.14%
Paint & Appaloosa	11,532.84	10,522.22	9.60%	9,500.89	21.39%
<u>Administration</u>					
Thoroughbred	9,600.12	8,899.82	7.87%	8,513.14	12.77%
Quarterhorse	8,903.09	8,238.24	8.07%	7,829.01	13.72%
Paint & Appaloosa	1,281.43	1,169.15	9.60%	1,055.66	21.39%
<u>Benevolence</u>					
Thoroughbred	4,800.06	4,449.90	7.87%	4,256.57	12.77%
Quarterhorse	4,451.54	4,119.11	8.07%	3,914.51	13.72%
Paint & Appaloosa	640.72	584.57	9.61%	527.83	21.39%
<u>Promotions</u>					
Thoroughbred	9,600.12	8,899.82	7.87%	8,513.14	12.77%
Quarterhorse	8,903.09	8,238.24	8.07%	7,829.01	13.72%
Paint & Appaloosa	1,281.43	1,169.15	9.60%	1,055.66	21.39%
Licensee	\$3,787,447.84	\$3,658,204.50	3.53%	\$3,474,435.20	9.01%



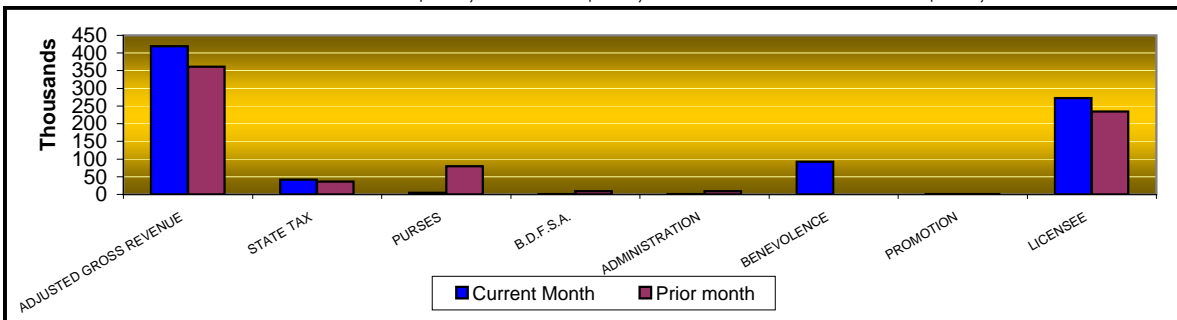
**OKLAHOMA STATE AUDITOR & INSPECTOR
GAMING AT OKLAHOMA HORSE RACING TRACKS
CALENDAR 2007**

	<u>TOTAL</u>	<u>BLUE RIBBON DOWNS</u>	<u>WILL ROGERS DOWNS</u>	<u>REMINGTON PARK</u>
Gaming Days This Year	729	243	243	243
Opening Date		10/17/05	12/09/05	11/21/05
Adjusted Gross Revenue	<u>\$52,851,347.39</u>	<u>\$2,968,168.62</u>	<u>\$12,567,078.02</u>	<u>\$37,316,100.75</u>
State Tax				
Higher Education Trust Fund	678,112.76	35,618.02	150,804.94	491,689.80
Education Reform	4,972,827.00	261,198.83	1,105,902.86	3,605,725.31
Purse Fund				
<u>Purses</u>				
Thoroughbred	6,283,680.53	290,509.49	1,280,253.32	4,712,917.72
Quarterhorse	5,886,235.85	295,518.30	1,302,326.64	4,288,390.91
Paint & Appaloosa	850,450.89	65,670.74	289,408.91	495,371.24
Breeding Development Fund				
<u>Special Account</u>				
Thoroughbred	934,136.80	35,061.48	154,513.33	744,561.99
Quarterhorse	785,833.55	30,052.70	132,440.01	623,340.84
Paint & Appaloosa	86,486.24	6,678.37	29,431.13	50,376.74
<u>Administration</u>				
Thoroughbred	74,028.93	3,339.21	14,715.56	55,974.16
Quarterhorse	68,431.51	3,339.21	14,715.56	50,376.74
Paint & Appaloosa	9,609.58	742.04	3,270.12	5,597.42
<u>Benevolence</u>				
Thoroughbred	37,014.41	1,669.56	7,357.77	27,987.08
Quarterhorse	34,215.71	1,669.56	7,357.77	25,188.38
Paint & Appaloosa	4,804.81	371.03	1,635.08	2,798.70
<u>Promotions</u>				
Thoroughbred	74,028.93	3,339.21	14,715.56	55,974.16
Quarterhorse	68,431.51	3,339.21	14,715.56	50,376.74
Paint & Appaloosa	9,609.58	742.04	3,270.12	5,597.42
Licensee	\$31,993,408.79	\$1,929,309.60	\$8,040,243.79	\$22,023,855.40



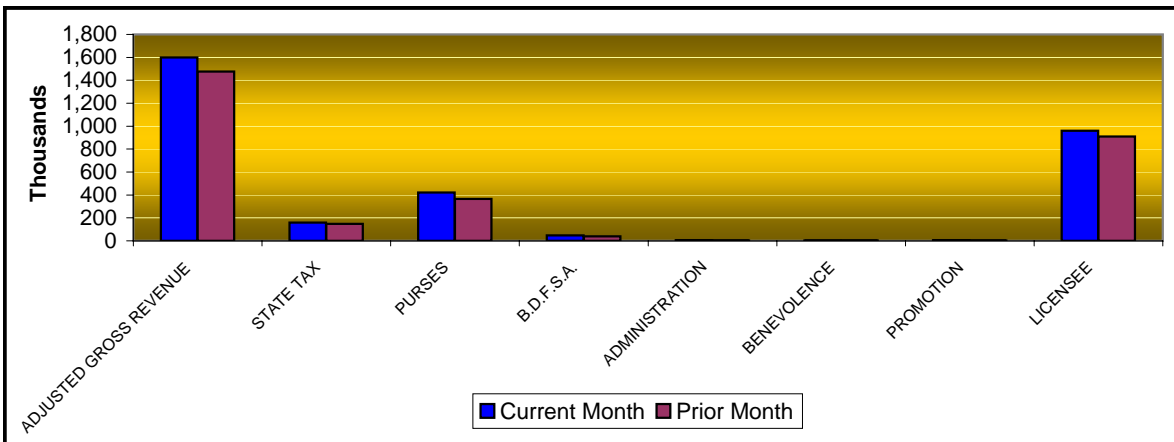
**OKLAHOMA STATE AUDITOR & INSPECTOR
GAMING AT OKLAHOMA HORSE RACING TRACKS
AUGUST 2007**

<u>Blue Ribbon Downs</u>	<u>CURRENT MONTH</u>	<u>PRIOR MONTH</u>	<u>% CHANGE</u>	<u>AUGUST 2006</u>	<u>% CHANGE</u>
Gaming Days	31	31	0.00%	31	0.00%
Opening Date	10/17/2005				
Adjusted Gross Revenue	\$419,107.56	\$361,144.37	16.05%	\$366,844.24	14.25%
State Tax					
Higher Education Trust Fund	5,029.29	4,333.73	16.05%	4,402.13	14.25%
Education Reform	36,881.47	31,780.70	16.05%	32,282.29	14.25%
Purse Fund					
<u>Purses</u>					
Thoroughbred	41,020.15	35,347.00	16.05%	36,523.93	12.31%
Quarterhorse	41,727.40	35,956.44	16.05%	36,523.93	14.25%
Paint & Appaloosa	9,272.75	7,990.32	16.05%	8,116.43	14.25%
Breeding Development Fund					
<u>Special Account</u>					
Thoroughbred	4,950.71	4,266.02	16.05%	3,714.30	33.29%
Quarterhorse	4,243.46	3,656.59	16.05%	3,714.30	14.25%
Paint & Appaloosa	942.99	812.57	16.05%	825.40	14.25%
<u>Administration</u>					
Thoroughbred	471.50	406.29	16.05%	412.70	14.25%
Quarterhorse	471.50	406.29	16.05%	412.70	14.25%
Paint & Appaloosa	104.78	90.29	16.05%	91.71	14.25%
<u>Benevolence</u>					
Thoroughbred	235.74	203.14	16.05%	206.35	14.24%
Quarterhorse	235.74	203.14	16.05%	206.35	14.24%
Paint & Appaloosa	52.39	45.14	16.06%	45.86	14.24%
<u>Promotions</u>					
Thoroughbred	471.50	406.29	16.05%	412.70	14.25%
Quarterhorse	471.50	406.29	16.05%	412.70	14.25%
Paint & Appaloosa	104.78	90.29	16.05%	91.71	14.25%
Licensee	\$272,419.91	\$234,743.84	16.05%	\$238,448.75	14.25%



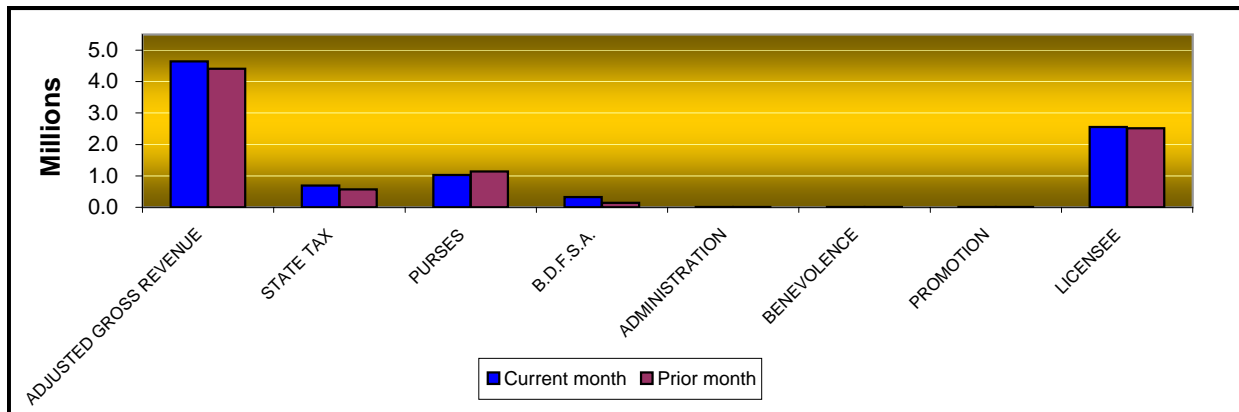
**OKLAHOMA STATE AUDITOR & INSPECTOR
GAMING AT OKLAHOMA HORSE RACING TRACKS
AUGUST 2007**

<u>Will Rogers Downs</u>	<u>CURRENT</u>	<u>PRIOR</u>	<u>%</u>	<u>AUGUST</u>	<u>%</u>
	<u>MONTH</u>	<u>MONTH</u>	<u>CHANGE</u>	<u>2006</u>	<u>CHANGE</u>
Gaming Days	31	31	0.00%	31	0.00%
Opening Date	12/09/05				
Adjusted Gross Revenue	\$1,598,706.72	\$1,475,397.98	8.36%	\$1,119,270.38	42.83%
State Tax					
Higher Education Trust Fund	19,184.48	17,704.78	8.36%	13,431.24	42.83%
Education Reform	140,686.19	129,835.02	8.36%	98,495.79	42.83%
Purse Fund					
<u>Purses</u>					
Thoroughbred	187,768.11	163,360.45	14.94%	111,437.36	68.50%
Quarterhorse	191,005.49	166,177.00	14.94%	111,437.36	71.40%
Paint & Appaloosa	42,445.66	36,928.22	14.94%	24,763.86	71.40%
Breeding Development Fund					
<u>Special Account</u>					
Thoroughbred	22,661.67	19,715.91	14.94%	11,332.61	99.97%
Quarterhorse	19,424.29	16,899.36	14.94%	11,332.61	71.40%
Paint & Appaloosa	4,316.51	3,755.41	14.94%	2,518.36	71.40%
<u>Administration</u>					
Thoroughbred	2,158.25	1,877.71	14.94%	1,259.18	71.40%
Quarterhorse	2,158.25	1,877.71	14.94%	1,259.18	71.40%
Paint & Appaloosa	479.61	417.27	14.94%	279.82	71.40%
<u>Benevolence</u>					
Thoroughbred	1,079.13	938.85	14.94%	629.59	71.40%
Quarterhorse	1,079.13	938.85	14.94%	629.59	71.40%
Paint & Appaloosa	239.81	208.64	14.94%	139.91	71.40%
<u>Promotions</u>					
Thoroughbred	2,158.25	1,877.71	14.94%	1,259.18	71.40%
Quarterhorse	2,158.25	1,877.71	14.94%	1,259.18	71.40%
Paint & Appaloosa	479.61	417.27	14.94%	279.82	71.40%
Licensee	\$959,224.03	\$910,590.12	5.34%	\$727,525.74	31.85%



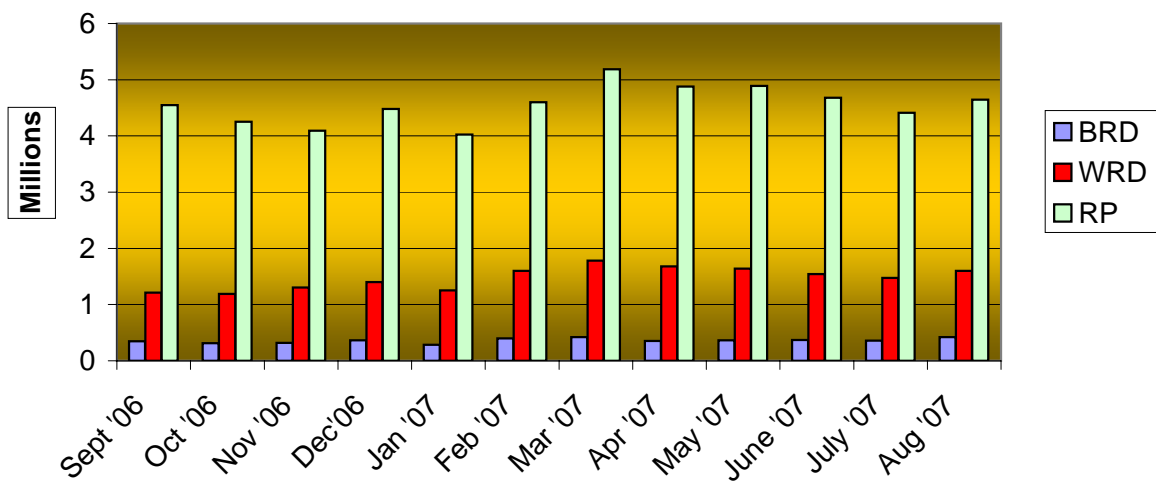
**OKLAHOMA STATE AUDITOR & INSPECTOR
GAMING AT OKLAHOMA HORSE RACING TRACKS
AUGUST 2007**

<u>Remington Park</u>	<u>CURRENT MONTH</u>	<u>PRIOR MONTH</u>	<u>% CHANGE</u>	<u>AUGUST 2006</u>	<u>% CHANGE</u>
Gaming Days	31	31	0.00%	31	0.00%
Opening Date	11/21/05				
Adjusted Gross Revenue	\$4,646,916.18	\$4,410,549.61	5.36%	\$4,560,837.71	1.89%
<u>State Tax</u>					
Higher Education Trust Fund	83,644.49	68,941.70	21.33%	82,095.08	1.89%
Education Reform	613,392.94	505,572.49	21.33%	602,030.58	1.89%
<u>Purse Fund</u>					
<u>Purses</u>					
Thoroughbred	449,589.14	575,576.72	-21.89%	605,451.21	-25.74%
Quarterhorse	517,550.28	509,087.69	1.66%	544,906.09	-5.02%
Paint & Appaloosa	61,687.81	58,550.05	5.36%	60,545.12	1.89%
Breeding Development Fund					
<u>Special Account</u>					
Thoroughbred	230,022.35	69,466.16	231.13%	61,571.31	273.59%
Quarterhorse	94,100.05	71,450.90	31.70%	55,414.18	69.81%
Paint & Appaloosa	6,273.34	5,954.24	5.36%	6,157.13	1.89%
<u>Administration</u>					
Thoroughbred	6,970.37	6,615.82	5.36%	6,841.26	1.89%
Quarterhorse	6,273.34	5,954.24	5.36%	6,157.13	1.89%
Paint & Appaloosa	697.04	661.59	5.36%	684.13	1.89%
<u>Benevolence</u>					
Thoroughbred	3,485.19	3,307.91	5.36%	3,420.63	1.89%
Quarterhorse	3,136.67	2,977.12	5.36%	3,078.57	1.89%
Paint & Appaloosa	348.52	330.79	5.36%	342.06	1.89%
<u>Promotions</u>					
Thoroughbred	6,970.37	6,615.82	5.36%	6,841.26	1.89%
Quarterhorse	6,273.34	5,954.24	5.36%	6,157.13	1.89%
Paint & Appaloosa	697.04	661.59	5.36%	684.13	1.89%
Licensee	\$2,555,803.90	\$2,512,870.54	1.71%	\$2,508,460.71	1.89%



OKLAHOMA STATE AUDITOR & INSPECTOR
GAMING AT OKLAHOMA HORSE RACING TRACKS
AUGUST 2007

ADJUSTED GROSS REVENUE
PREVIOUS TWELVE MONTHS





Office of the State Auditor and Inspector
2300 N. Lincoln Boulevard, Room 100
Oklahoma City, OK 73105-4896

www.sai.state.ok.us